



Submersible Deep Well 4", 6", 8", 10"

MCKARLEN

MAKING **THE DIFFERENCE** IN PERFORMANCE AND DURABILITY



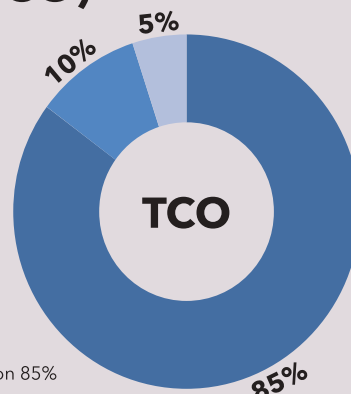
State of The Art Design

McKarlen is one of the main manufacturer of Deep Well Submersible Pumps made of high quality stainless steel for bore holes. Special design on the impeller and diffuser make this pump resistant to a small amount of sands.

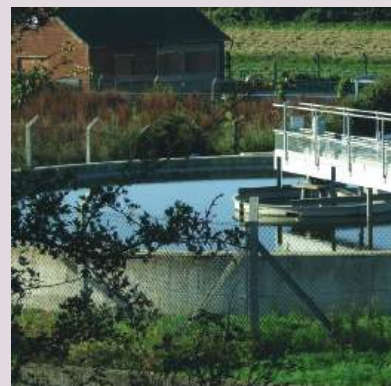
The state of the art design is very energy efficient and offer a high performance pumping therefore easy installation and low maintenance costs.

Total Cost of Ownership (TCO)

McKarlen strives to offer customer solutions designed to reduce the overall cost of operation – realising that the purchase price is really only one cost component of many. McKarlen promotes transparency of the Total Cost of Ownership, offering a cost advantage over competitors on the combined basis of purchase price, operation time, energy consumption and service.



Energy Consumption 85%
Purchase Price 5%
Service & Maintenance 10%





Basic Features

- Corrosion resistant, Non-polluting, stainless steel construction – inside and out.
- Built-in jam-free stainless steel check valve will effectively prevent backflow of water in the pipe from affecting pump performance when the motor is not operating.
- Precision stainless steel intermediate chamber can help maintain optimum performance even when pressure is greatest.
- The high-performance, highly efficient stainless steel impellers are one of the special features of McKarlen submersible pump. It is incomparably superior to ordinary plastic or brass impellers in terms of abrasion resistance and service life.
- The stainless steel strainer can prevent the entry of sand or other extraneous material. The smooth safety hook will prevent the cable from abrading.

Application

- Supply of raw water for households
- Supply of water from the wells to the reservoir
- Irrigation, Plantation and Agriculture
- Industrial and municipal application

Rewindable Motors

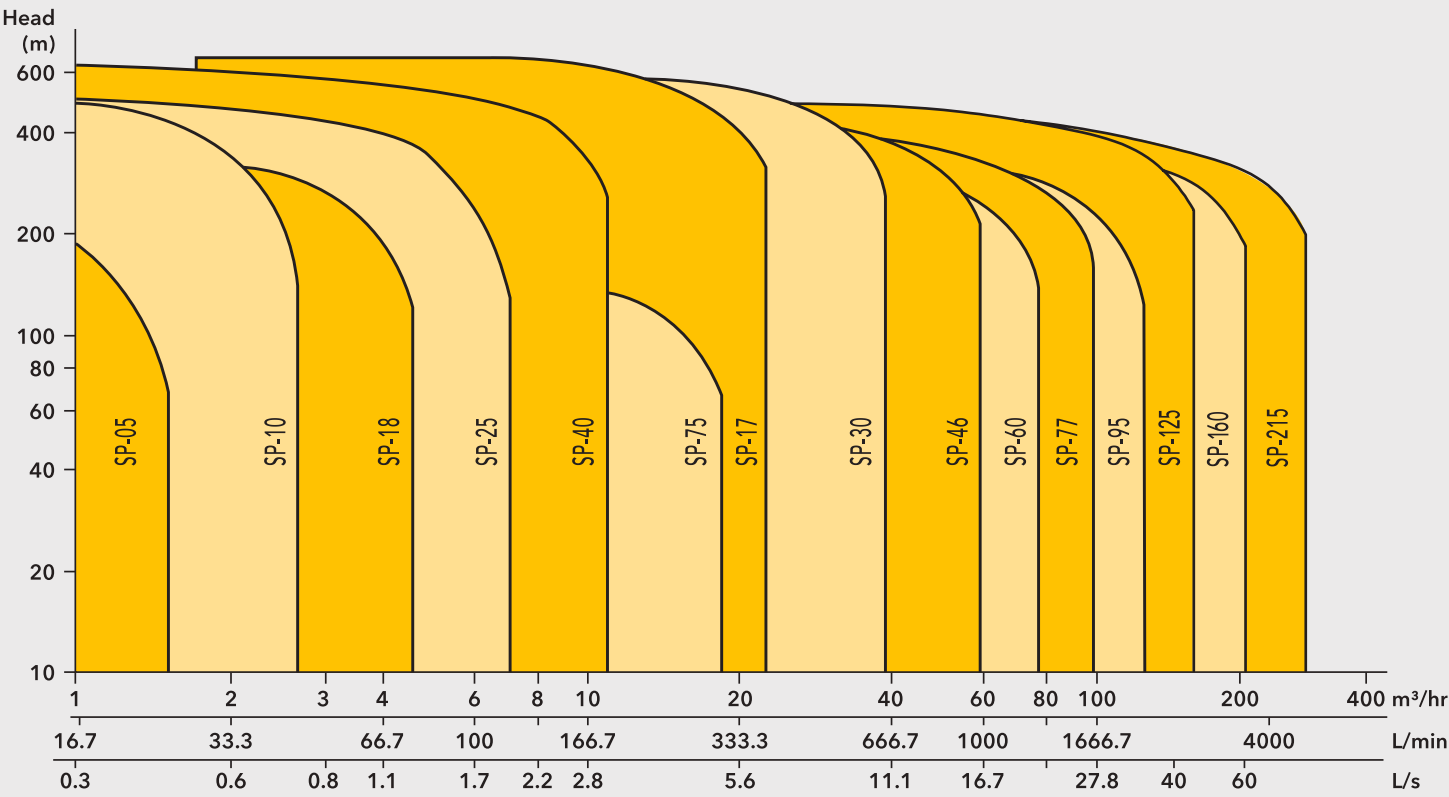
Features

- Conform to international standard of IEC34-1, CE, whole blocked asynchronous motor with squirrel cage rotor.
- Outer shell, shaft and bottom made of stainless steel.
- Brass alloy or Nickel plated cast-iron upper bracket.
- Swedish bearing or equivalent products can undertake higher thrust load
- Italian mechanical seal.
- Pressure automatic adjusting device made of oil-proof and waterproof reformed butyl rubber.
- Flange connector conform to the standard of NEMA (USA National Electrical Manufacturing Association).
- Lacquer-coated wire conforms to USA standard of NEMA MW37-C.

Materials

- high-quality cold-rolled silicon steel lamination.
- Special mechanical seal design.
- 220°C-resistant lacquer-coated wires.
- high-quality bearing undertaking big thrust load.

Performance



Pump Range

TYPE	SP 05	SP 10	SP 18	SP 25	SP 40	SP 75	SP 17	SP 30	SP 46	SP 60	SP 77	SP 95	SP125	SP160	SP215
MATERIAL	STAINLESS STEEL 304														
DIMENSION, Inch	4"					6"					8"			10"	
CONNECTION	1 ¼"	1 ¼"	1 ¼"	1 ½"	2"	2"	2 ½"	3"	4"	4"	5"	5"	6"	6"	6"

www.mckarlen.com



MCKARLEN